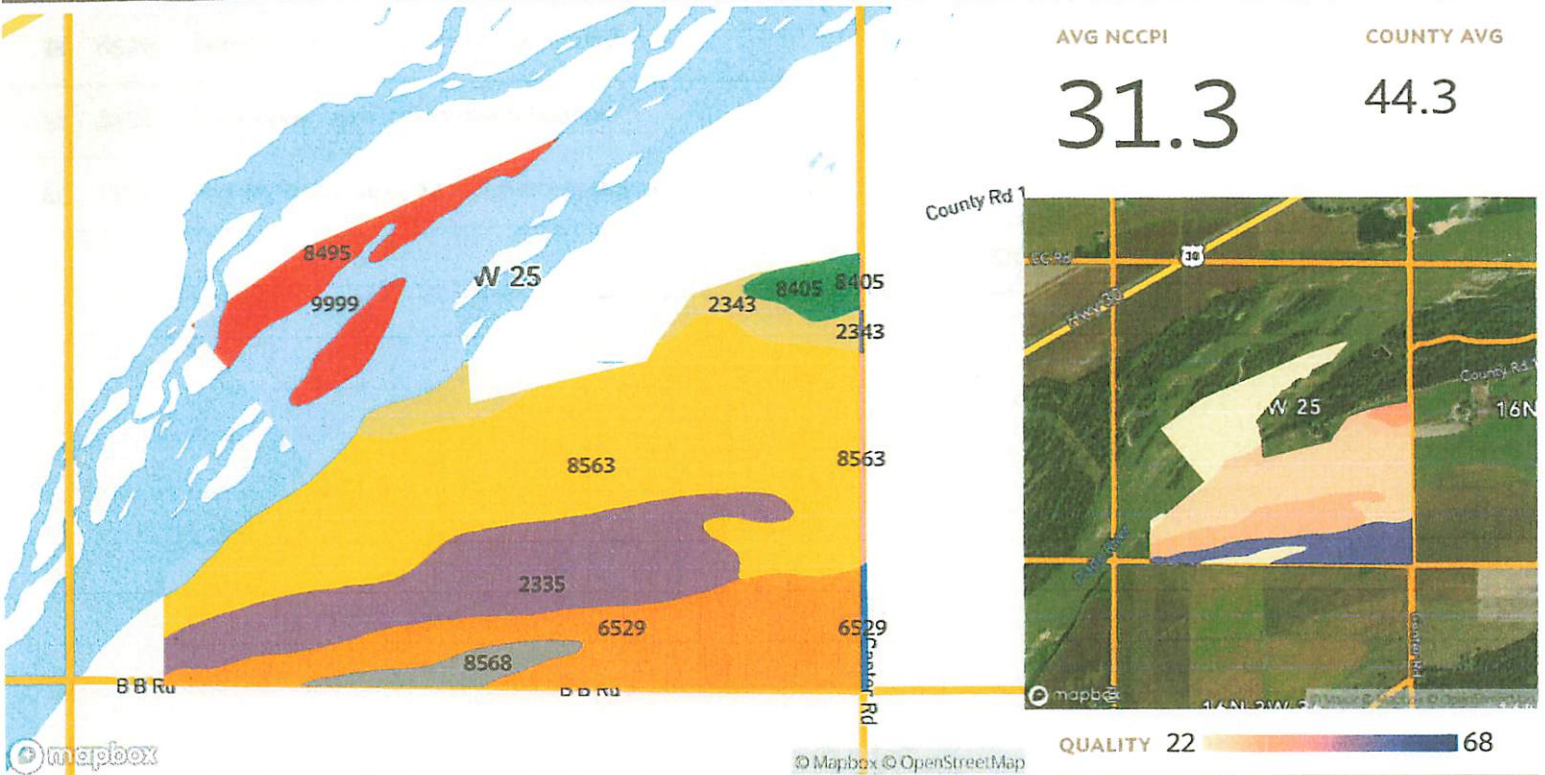


1 field, 269 acres in Merrick County, NE

TOWNSHIP/SECTION 16N 2W - 30, 16N 3W - 25



Source: NRCS Soil Survey

## All fields

269 ac.

SOIL CODE	SOIL DESCRIPTION	ACRES	PERCENTAGE OF FIELD	SOIL CLASS	NCCPI
8563	Platte loam, occasionally flooded	98.38	36.6%	4	26.0
2335	Inavale loamy fine sand, 0 to 3 percent slopes	43.83	16.3%	4	30.4
6529	Janude sandy loam, very rarely flooded	42.60	15.8%	2	54.9
9999	Water	42.57	15.8%		N/A
8495	Gothenburg soils, frequently flooded	16.70	6.2%	7	10.1
2343	Inavale loamy sand, 3 to 11 percent slopes	11.31	4.2%	6	27.9
8568	Platte-Alda loams, channeled, frequently flooded	6.19	2.3%	7	19.5
8405	Alda sandy loam, occasionally flooded	5.18	1.9%	3	34.4
8563	Platte loam, occasionally flooded	1.11	0.4%	4	26.0

1 field, 269 acres in Merrick County, NE

TOWNSHIP/SECTION 16N 2W - 30, 16N 3W - 25

■	6529	Janude sandy loam, very rarely flooded	0.82	0.3%	2	54.9
■	8405	Alda sandy loam, occasionally flooded	0.22	0.1%	3	34.4
■	2343	Inavale loamy sand, 3 to 11 percent slopes	0.18	0.1%	6	27.9
			<b>226.52</b>	<b>84.2%</b>		<b>31.3</b>